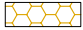
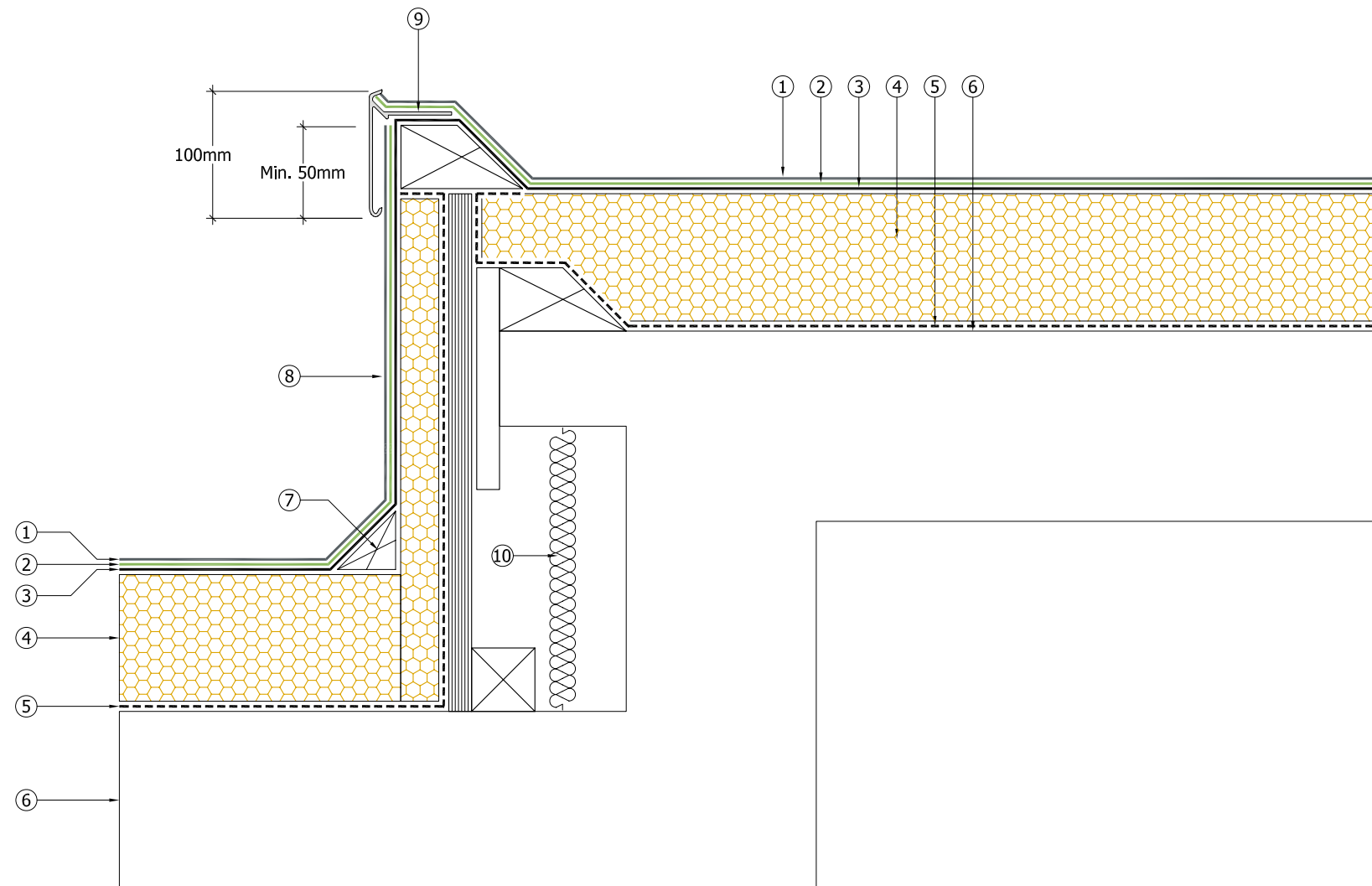


**Key**

- ① — Decaflex Top Coat applied in strict accordance with Sika Liquid Plastics Project Specification
- ② — Decaflex Embedment Coat applied at correct coverage rate for the substrate surface conditions embedded with Sika Reemat Premium GFM
- ③ — Sika Liquid Plastics Carrier Membrane SA applied in strict accordance with Sika Liquid Plastics Specification
- ④  Decotherm insulation bonded in strict accordance with Sika Liquid Plastics Project Specification
- ⑤ - - - - S-Vap 5000E SA self adhesive Vapour Control Layer [as required] applied to substrates prepared and primed with Sika Primer 600 in strict accordance with Sika Liquid Plastics Project specification
- ⑥ Existing substrate prepared in strict accordance with Sika Liquid Plastics Project Specification
- ⑦ Tanalised timber fillets [as required] and hard edges bonded with Decostik SP; exposed timber surfaces to be coated in the schedule of works must be prepared and primed with Quick Cure Primer
- ⑧ Decaflex Waterproofing System dressed on to prepared and primed upstands
- ⑨ Type 'C' Decotrim mechanically fixed to kerb following through-cure of the low-level system
- ⑩ Consequential voids must to be insulated to prevent cold bridging [by others]



Sika Liquid Plastics  
 Sika House  
 Miller Street  
 Preston  
 Lancashire PR1 1EA  
 Telephone: 01772 259781  
 Email: [technical.customer.services@uk.sika.com](mailto:technical.customer.services@uk.sika.com)  
 Web: [www.liquidplastics.co.uk](http://www.liquidplastics.co.uk)

This drawing is solely intended to illustrate the correct application of Sika Liquid Plastics products and systems, it must be read in conjunction with the appropriate specification and current issue of relevant Product Data Sheets. All elements bearing reference to structural and/or thermal design are shown indicatively and should not be used in whole or in part for any aspect of project design without consulting the relevant authorities.

For refurbishment projects, all aspects of the existing roof are deemed to be fully compliant with BS 6229:2003 [Code of Practice for Flat Roofs with Continuously Supported Coverings] or improved upon for instances where these standards are not met.

Site-specific details not covered by our standard range can be obtained by providing relevant information to the email address shown.

Project N<sup>o</sup>

DWG N<sup>o</sup> Revision

Project:

Drawing Title:  
 Built Up Roof Application  
 to a typical change in level with  
 existing fascia and soffit arrangement

Scale: NTS @ A3 Drawn:

Date:

